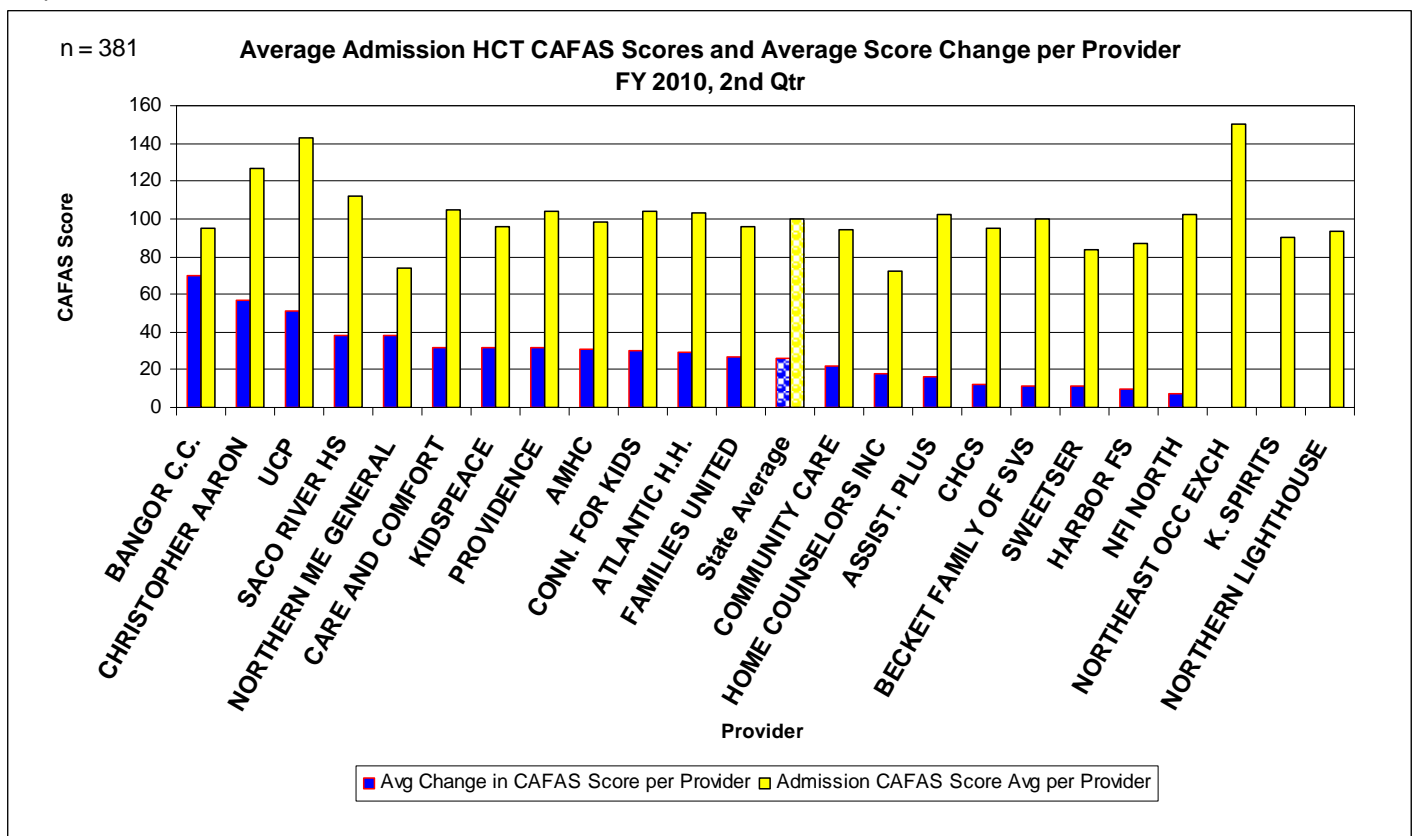


Maine Children’s Home & Community Based Treatment Service (HCT) Treatment Outcome Report- Measured by Change in CAFAS Score FY 2010, 2nd Qtr (Oct – Dec, 2009)

- The symptoms and functioning of children treated in the HCT service improved.
- This improvement was measured by a change in CAFAS score from admission to discharge.
- This improvement is statistically significant (p=0.0001). The average score improvement statewide is 26 points.
- The larger the change in score, the greater the improvement.
- Graph 1 displays the average admission CAFAS score alongside the average CAFAS improvement for each provider.
- Admission scores average 101, with a range of 72-150. Higher admission scores indicate children with greater treatment needs. A score of 100 or more means that a youth typically needs intensive services.

The Child & Adolescent Functional Assessment Scale or CAFAS (Hodges, 1997) is designed to measure the degree of functional challenges in children and adolescents with emotional, behavioral, and/or substance abuse challenges. This report uses the overall Youth Score in the analysis.

Graph1

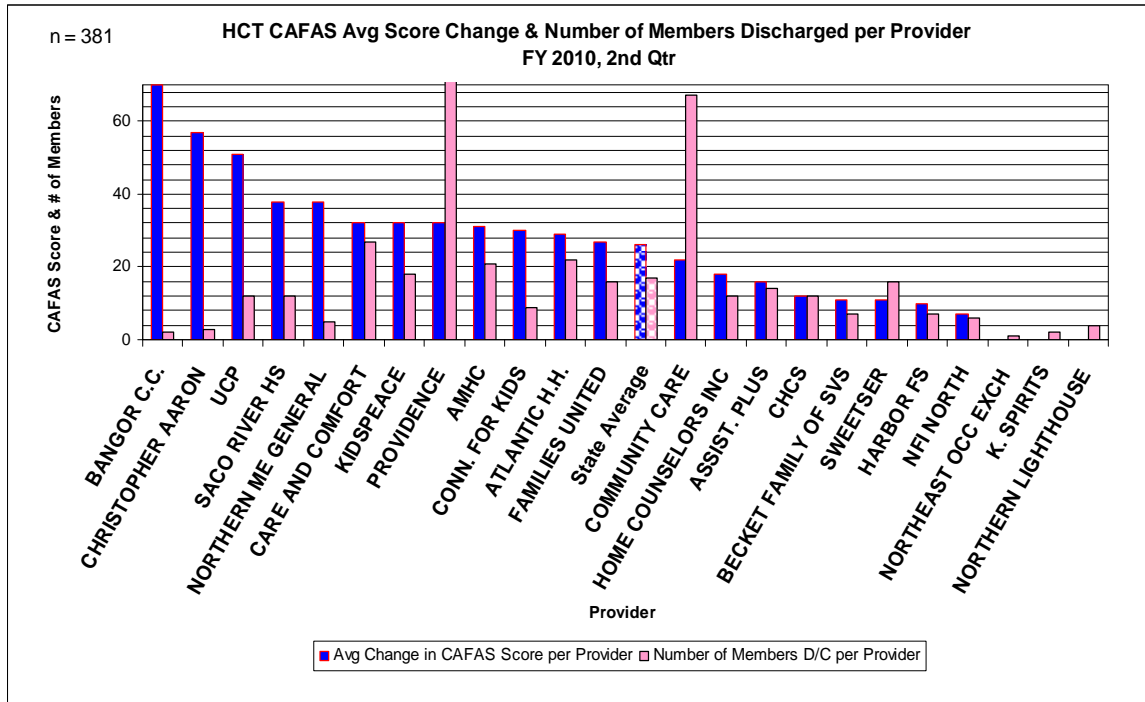


* All graphs include only members who have both an admission and discharge CAFAS, and exclude a total score of 0.

** The following agencies did not submit both admission and discharge CAFAS scores for members discharged in this quarter: ; Choices; Kennebec Behavioral Health; Resources for Resolving Violence; Spurwink; Tri-County MH; Youth and Family Services; Catholic Charities.

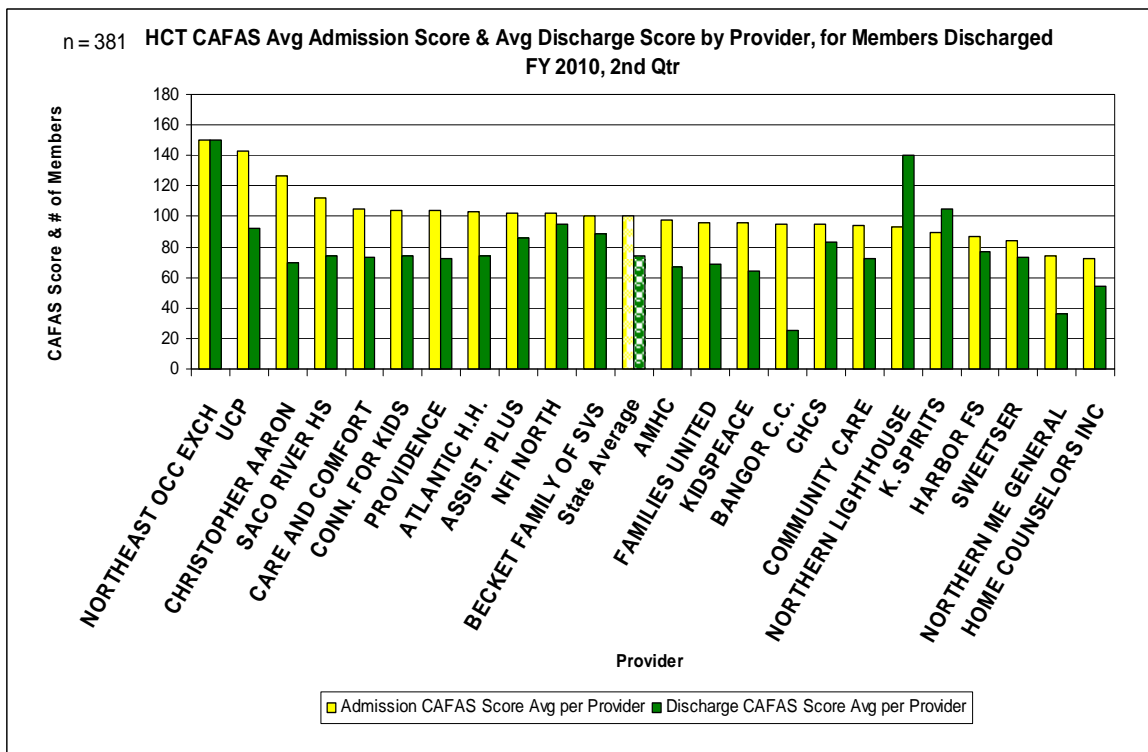
- Graph 2 displays the average CAFAS point improvement per provider, along with a bar that shows the number of members discharged by the provider in this quarter.

Graph2



- Graph 3 displays the average CAFAS admission score per provider along side a bar displaying the average discharge score per provider.

Graph 3



Report Statistics for the 2nd Quarter, FY 2010:	
Total # members served, unduplicated	1907
Total Census of Members authorized for HCT Services on last day of the quarter	1174
Average Length of Stay	128 days
Total # members discharged, unduplicated	718
Total # member episodes discharged	729
Discharged from MST & FFT, using a non-CAFAS outcome system	-152
HCT Discharges with CAFAS expected	577
Members discharged in less than 30 days	-139
Members age 6 and below	-57
Discharged with an admission and discharge CAFAS included in this data	381
Average Age of CAFAS tested population	10.09 y/o
# Males CAFAS tested population	241
# Females CAFAS tested population	140
Average Admission Score	99.66
Average Discharge Score	73.65
Average Point Change Statewide	26.01 points
Paired, Two-Tail, T-Test	<0.0001 score changes considered extremely statistically significant

Report Criteria:

HCT Program; Must have both Admission and Discharge CAFAS Scores; Must be in HCT program > 30 days; admission and discharge total scores of 0 are excluded; Average Point Change Score from admission to discharge score assessed for each consumer; Discharged from HCT service during FY 2010, 2nd qtr; Positive point change indicates improvement; negative indicates decline.