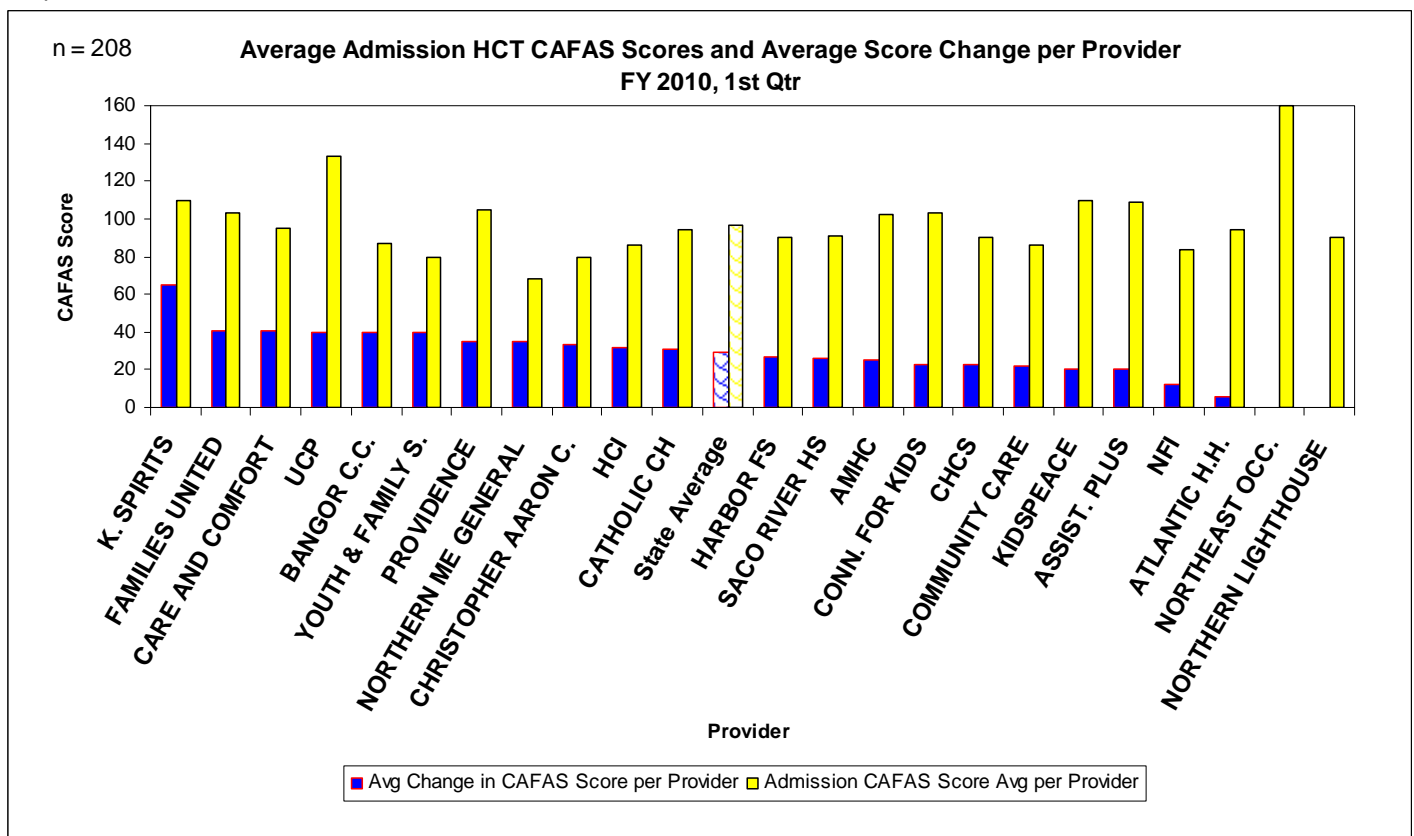


## Maine Children’s Home & Community Based Treatment Service (HCT) Treatment Outcome Report- Measured by Change in CAFAS Score FY 2010, 1st Qtr (July – Sept, 2009)

- The symptoms and functioning of children treated in the HCT service improved.
- This improvement was measured by a change in CAFAS score from admission to discharge.
- This improvement is statistically significant (p=0.0001). The average score improvement statewide is 29 points.
- The larger the change in score, the greater the improvement.
- Graph 1 displays the average admission CAFAS score alongside the average CAFAS improvement for each provider.
- Admission scores average 97, with a range of 68-160. Higher admission scores indicate children with greater treatment needs. A score of 100 or more means that a youth typically needs intensive services.

The Child & Adolescent Functional Assessment Scale or CAFAS (Hodges, 1997) is designed to measure the degree of functional challenges in children and adolescents with emotional, behavioral, and/or substance abuse challenges. This report uses the overall Youth Score in the analysis.

Graph 1

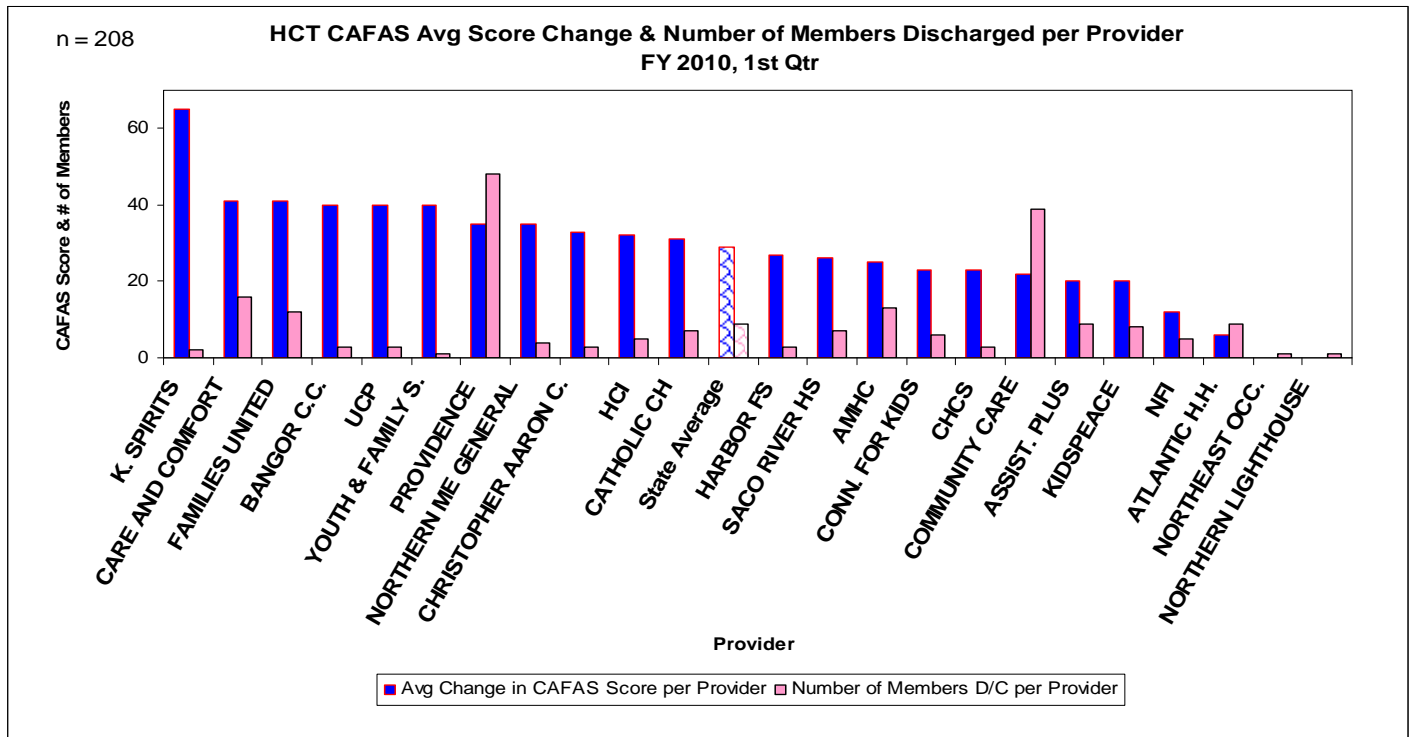


\* Graph includes only members who have both an admission and discharge CAFAS, and excludes a total score of 0.

\*\* The following agencies did not submit both admission and discharge CAFAS scores for members discharged in this quarter: Becket Family of Services; Choices; Kennebec Behavioral Health; Resources for Resolving Violence; Spurwink School; Tri-County Mental Health Services.

➤ Graph 2 displays the average CAFAS point improvement per provider, along with a bar that shows the number of members discharged by the provider in this quarter.

Graph2



The graph includes only members who have both an admission and discharge CAFAS, and excludes a total score of 0.

**Report Statistics for the 1<sup>st</sup> Quarter, FY 2010:**

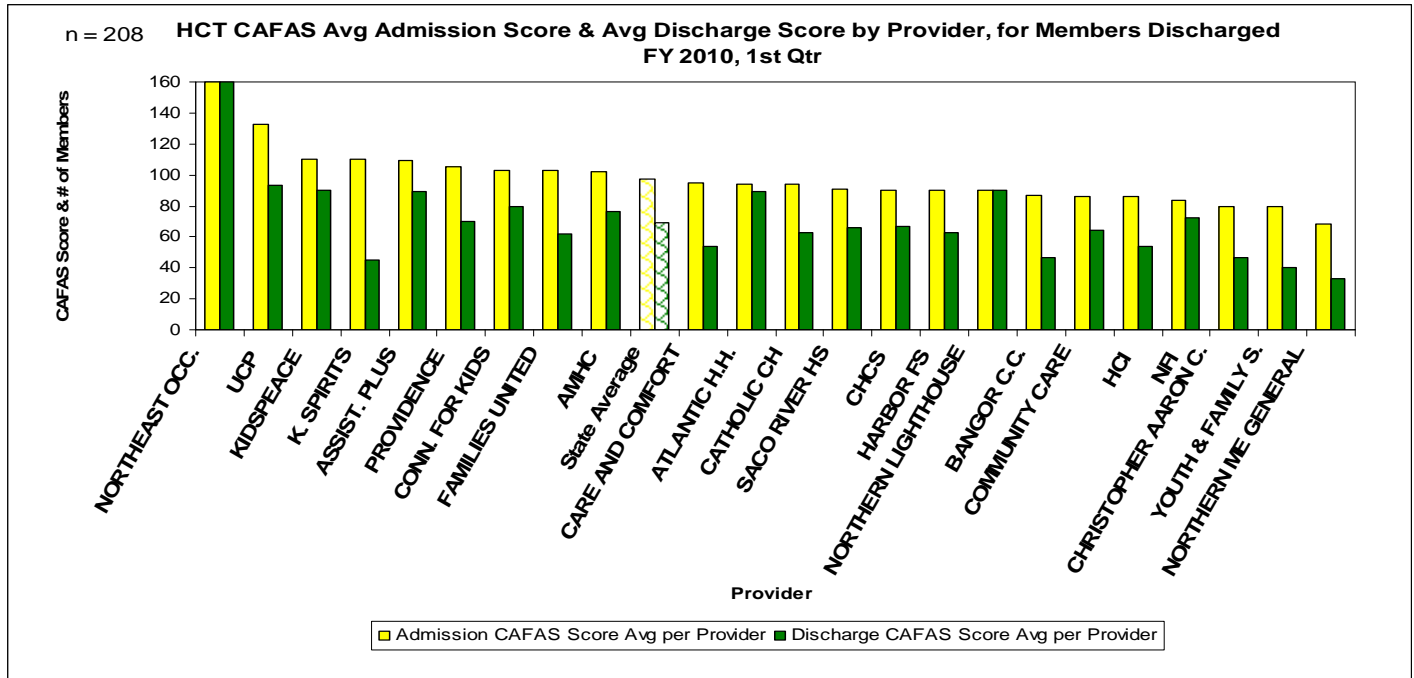
Total # members served, unduplicated	1899
Total Census of Members authorized for HCT Services on last day of the quarter	1192
Total # members admitted, unduplicated	819
Total # members discharged, unduplicated	671
Members with an admission and discharge CAFAS	208
Average Length of Stay	130 days
<hr/>	
Average Age of CAFAS tested population	10.30 y/o
Average Length of Stay of CAFAS tested population	224 days
ALOS Range CAFAS tested population	91-590 days
# Males CAFAS tested population	137
# Females CAFAS tested population	71
Average Admission Score	97.16
Average Discharge Score	68.61
Average Point Change Statewide	29 points
Paired, Two-Tail, T-Test	<0.0001 score changes considered extremely statistically significant

**Report Criteria:**

HCT Program; Must have both Admission and Discharge CAFAS Scores; Must be in HCT program > 30 days; admission and discharge total scores of 0 are excluded; Average Point Change Score from admission to discharge score assessed for each consumer; Discharged from HCT service during FY 2010, 1st qtr; Positive point change indicates improvement; negative indicates decline.

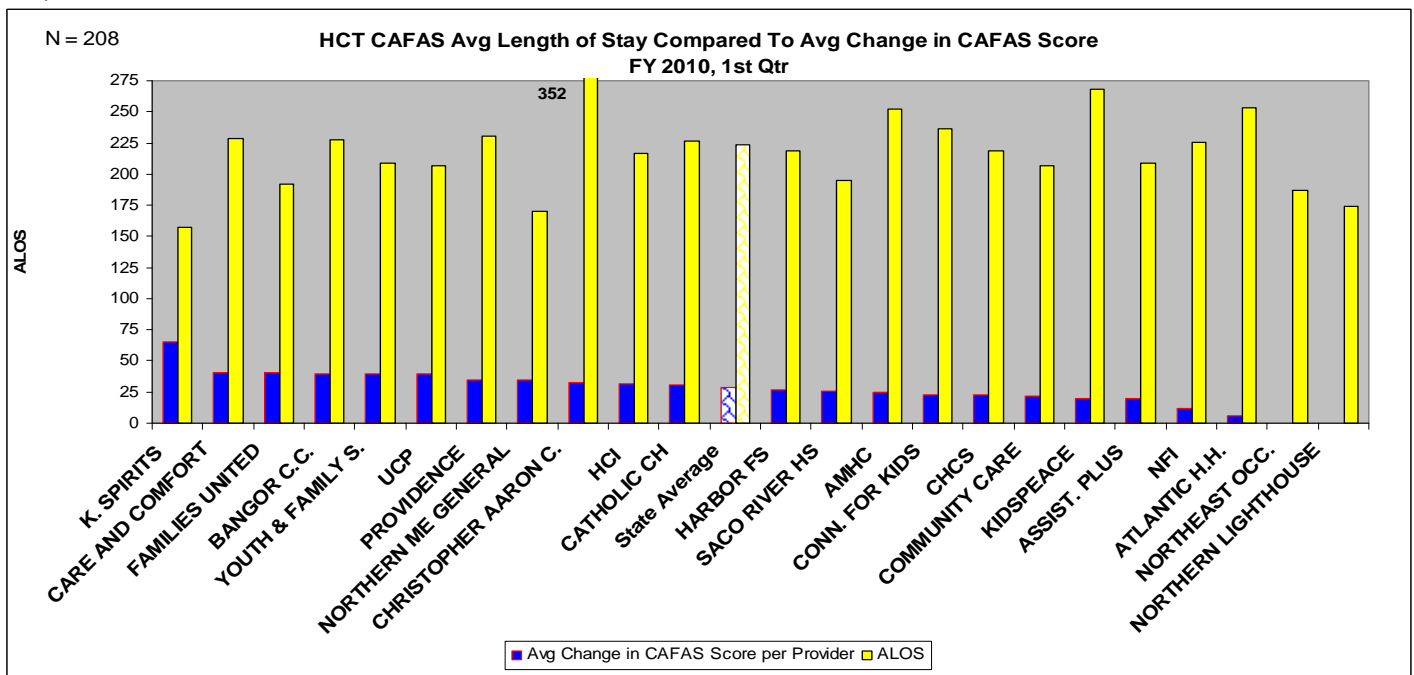
- Graph 3 displays the average CAFAS admission score per provider along side a bar displaying the average discharge score per provider.

Graph 3



- Graph 4 compares the average length of stay (ALOS) per provider with a bar that indicates the average change in CAFAS score per provider.

Graph 4



Note: All changes in CAFAS score indicate a decrease in score from admission score to discharge score. There was no change in the scores of two of the Providers, Northeast Occ and Northern Lighthouse.