

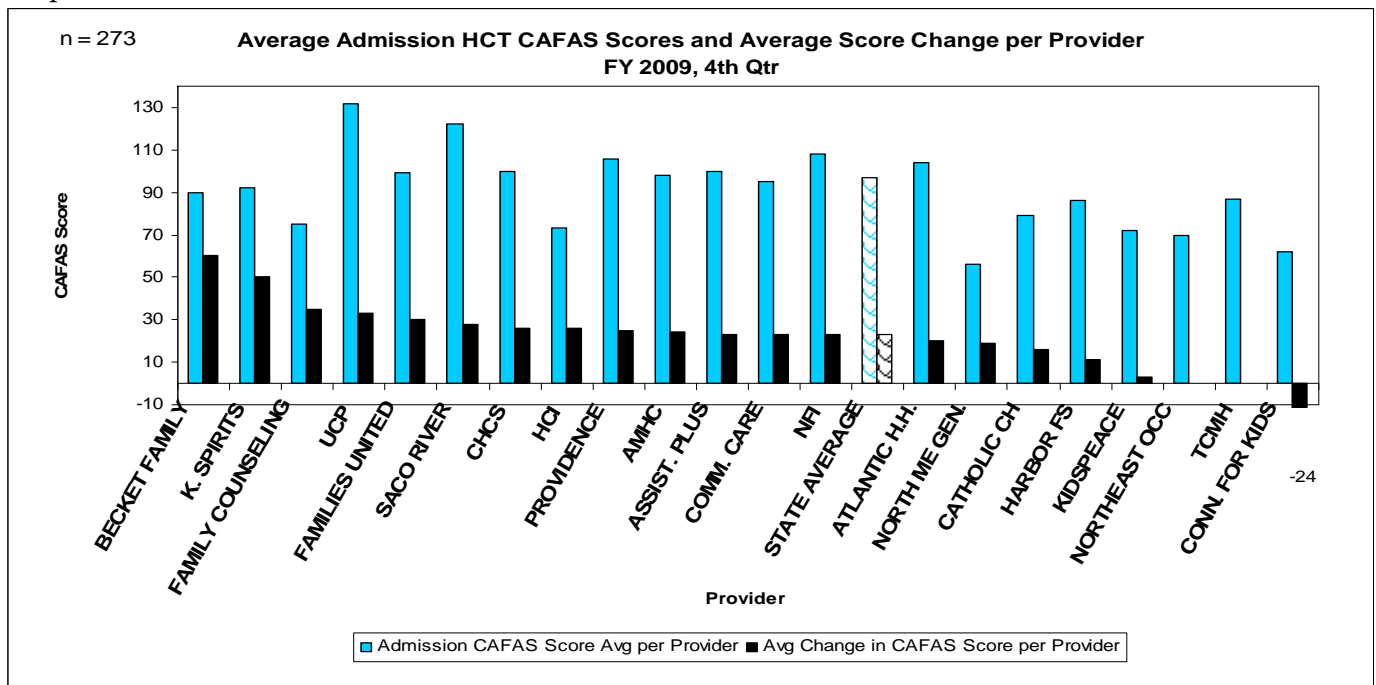


**Maine Children’s Home & Community Based Treatment Service (HCT)  
Treatment Outcome Report- Measured by Change in CAFAS Score  
FY 2009, 4th Qtr (April – June, 2009)**

- The symptoms and functioning of children treated in the HCT service improved.
- This improvement was measured by a change in CAFAS score from admission to discharge.
- This improvement is statistically significant The average score improvement statewide is 27 points
- The larger the change in score, the greater the improvement.
- Graph 1 displays the average admission CAFAS score alongside the average CAFAS point improvement for each provider.
- Admission scores average 97, with a range of 0-200. Higher admission scores indicate children with greater treatment needs. A score of 100 or more means that a youth typically needs intensive services.

The Child & Adolescent Functional Assessment Scale or CAFAS (Hodges, 1997) is designed to measure the degree of functional challenges in children and adolescents with emotional, behavioral, and/or substance abuse challenges. This report uses the overall Youth Score in the analysis.

Graph 1



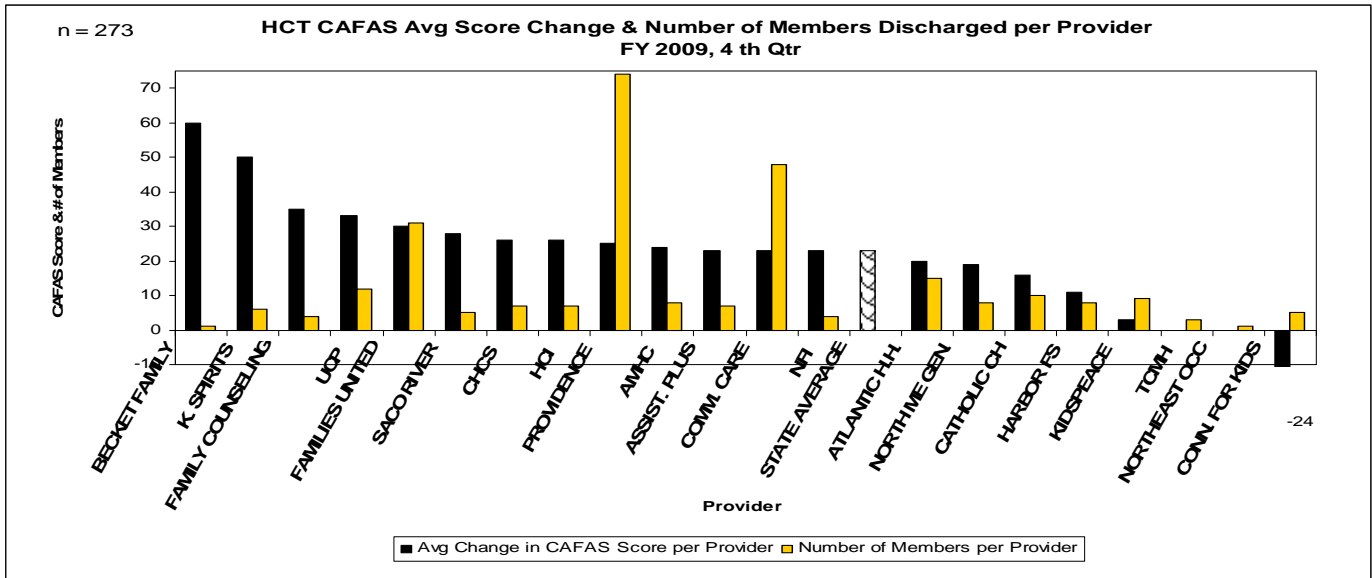
\* Graph includes only members who have both an admission and discharge CAFAS

\*\* The following agencies did not submit both admission and discharge CAFAS scores for members discharged in this quarter: Bangor Counseling Center; Care and Comfort; Choices; Christopher Aaron Counseling; Food Addiction & Chemical Dependency; Kennebec Behavioral Health; Resources for Resolving Violence; Spurwink School; Northern Lighthouse; Youth and Family Services.



- Graph 2 displays the average CAFAS point improvement per provider, along with a line that shows the number of members discharged by the provider in this quarter.

Graph 2



\* Graph includes only members who have both an admission and discharge CAFAS

Report Statistics for the 3 <sup>rd</sup> & 4 <sup>th</sup> Quarter, FY 2009:		
	3 <sup>rd</sup> Qtr	4 <sup>th</sup> Qtr
Total # members served in HCT program statewide, unduplicated	1732	1448
Total Census of Members authorized for HCT Services on last day of the quarter	1,148	926
Total # members admitted, unduplicated in the quarter	748	624
Total # members discharged, unduplicated in the quarter	559	417
Members with an admission and discharge CAFAS	163	273
Average Length of Stay	133 days	129 days
Average Age of CAFAS tested population	10.7 years	10.82 years
Average Length of Stay of CAFAS tested population	192 days	176 days
# Male	103	165
# Female	60	108
Average Admission Score	97.42	97.03
Average Discharge Score	70.8	73.88
Average Point Change Statewide	27 points	23 points
Change in score from admission to discharge considered statistically significant, using a paired, two-tailed, T-Test	P = <0.0001	P = <0.0001

\*66% (273 of 417) of members discharged in the 4<sup>th</sup> quarter had both an admission and discharge CAFAS compared to 29% (163 of 559) in the 3<sup>rd</sup> quarter.

**Report Criteria:**

HCT Program; Must have both Admission and Discharge CAFAS Scores; Must be in HCT program > 30 days; Average Point Change Score from admission to discharge score assessed for each consumer; Discharged from HCT service during FY 2009, 3<sup>rd</sup> and 4<sup>th</sup> qtr; Positive point change indicates improvement; negative indicates decline