

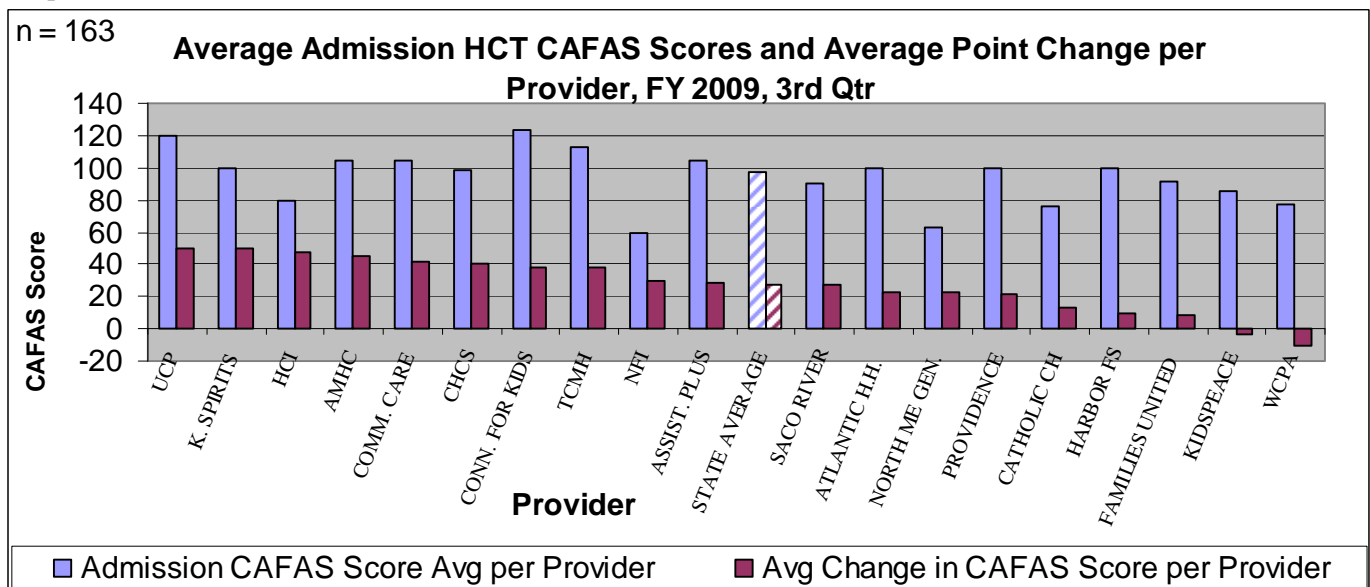


**Maine Children’s Home & Community Based Treatment Service (HCT)
Treatment Outcome Report- Measured by Change in CAFAS Score
FY 2009, 3rd Qtr (Jan-Mar 2009)**

- The symptoms and functioning of children treated in the HCT service improved.
- This improvement was measured by a change in CAFAS score from admission to discharge.
- This improvement is statistically significant The average score improvement statewide is 27 points
- The larger the change in score, the greater the improvement.
- Graph 1 displays the average admission CAFAS score alongside the average CAFAS point improvement for each provider.
- Admission scores average 97, with a range of 60-120. Higher admission scores indicate children with greater treatment needs. A score of 100 or more means that a youth typically needs intensive services.
- While these findings are promising and clearly show improvement in symptoms and functioning for children and youth treated in HCT Services, it should be noted that, these findings alone, do not provide sufficient evidence to conclude that the service is effective. Further investigation, using more controlled research approaches is required to conclusively determine the effectiveness of HCT or other treatment services.

The Child & Adolescent Functional Assessment Scale or CAFAS (Hodges, 1997) is designed to measure the degree of functional challenges in children and adolescents with emotional, behavioral, and/or substance abuse challenges. This report uses the overall Youth Score in the analysis.

Graph 1



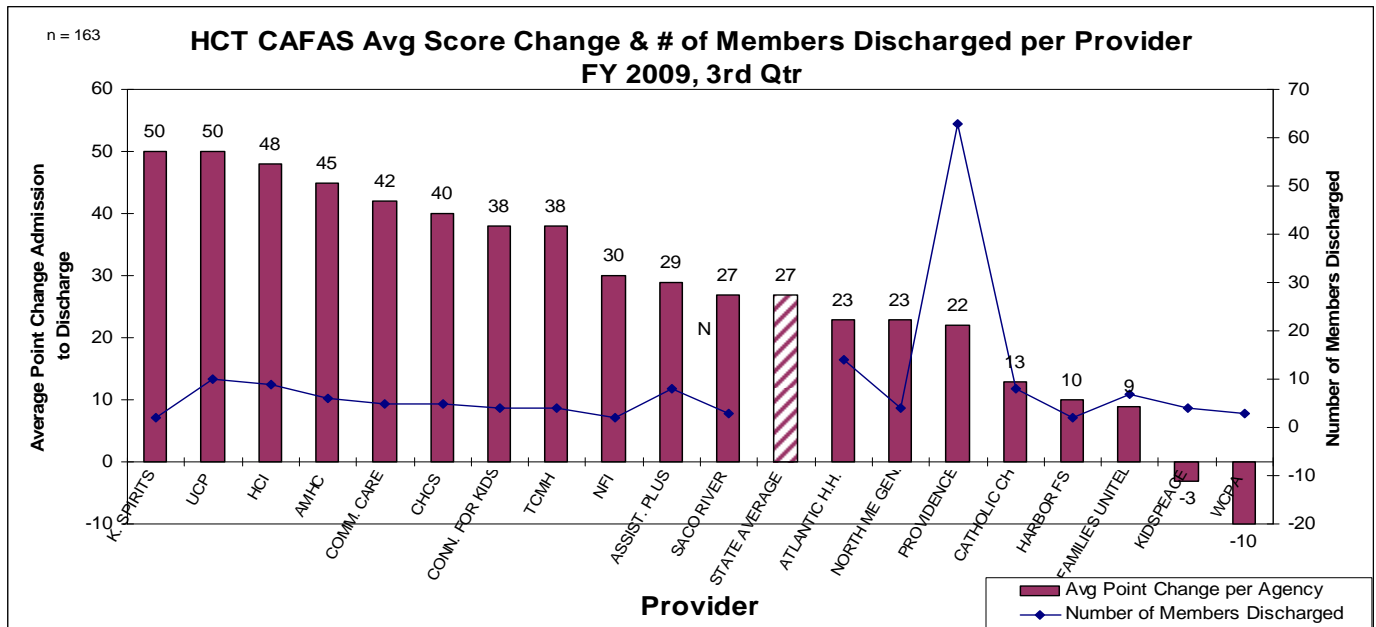
* Graph includes only members who have both an admission and discharge CAFAS

** The following agencies did not submit both admission and discharge CAFAS scores for members discharged in this quarter: Bangor Counseling Center; Becket Family of Services; Care and Comfort; Choices; Christopher Aaron Counseling; Food Addiction & Chemical Dependency; Kennebec Behavioral Health; Northeast Occupational; Resources for Resolving Violence; Spurwink School; Northern Lighthouse; Youth and Family Services.



- Graph 2 displays the average CAFAS point improvement per provider, along with a line that shows the number of members discharged by the provider in this quarter.

Graph 2



* Graph includes only members who have both an admission and discharge CAFAS

Report Statistics for the 3 rd Quarter, FY 2009:	
Total # members served in HCT program statewide, unduplicated	1732
Total Census of Members actively authorized for HCT Services as of 3/31/09	1,148
Total # members admitted, unduplicated 3 rd Quarter, FY 2009	748
Total # members discharged, unduplicated 3 rd Quarter, FY 2009	559
Members with an admission and discharge CAFAS	163
Average Length of Stay	192 days
Average Age	10.7 years
# Male	103
# Female	60
Average Admission Score	97.42
Average Discharge Score	70.8
Average Point Change Statewide	27 points
Change in score from admission to discharge considered statistically significant, using a paired, two-tailed, T-Test	P = <0.0001

*27% (163 of 559) of members discharged in this quarter had both an admission and discharge CAFAS.

Report Criteria:

HCT Program; Must have both Admission and Discharge CAFAS Scores; Must be in HCT program > 30 days; Average Point Change Score from admission to discharge score assessed for each consumer; Discharged from HCT service during FY 2009, 3qtr; Positive point change indicates improvement; negative indicates decline