



COSII Enrollee Evaluation & MAT Analysis

APS Data Forum
June 17, 2010

HORNBY ZELLER ASSOCIATES



AGENDA

- ① Enrollee Evaluation
 - ① Pilot Sites
 - ① Baseline Characteristics
 - ① Follow-up Information (3, 6 & 9 months)
- ① MAT Analysis (separate slides)

COSII ENROLLEE EVALUATION



PILOT SITES: 30

⊙ Cohort One

- ⊙ Maine Medical Center / Spring Harbor Hospital; Crisis & Counseling Center; Aroostook Mental Health Center

⊙ Cohort Two

- ⊙ Catholic Charities Maine Counseling; MaineGeneral Health; Riverview; Wellspring; Community Health and Counseling Services; Spurwink; Harbor Family Services; Facing Change; Youth and Family Services; Common Ties Mental Health Coalition

⊙ Cohort Three

- ⊙ Youth Alternatives Ingraham; Life by Design; Maine Pretrial Services; Kennebec Behavioral Health; Community Concepts; Crossroads for Women; Health Access Network; Mid-Coast Mental Health; Community Counseling Center; Day One

⊙ Cohort Four


- ⊙ Northeast Occupational Exchange; First Light Counseling Services; Counseling Services, Inc.; OHI; Eureka Counseling; York County Shelters; CAP Quality Care



COSII

ENROLLEE EVALUATION

- ⊙ Provides information on COD population and change over time
- ⊙ Cohort 1 enrolled 100 clients each; all other Cohorts enrolled at least 30
- ⊙ To be enrolled, a client must have
 - ⊙ a COD
 - ⊙ received at least 4 units of service
- ⊙ Enrollees receive a baseline and three follow-up interviews at 3-month intervals



CHARACTERISTICS AT BASELINE

N=1174



SUMMARY PROFILE

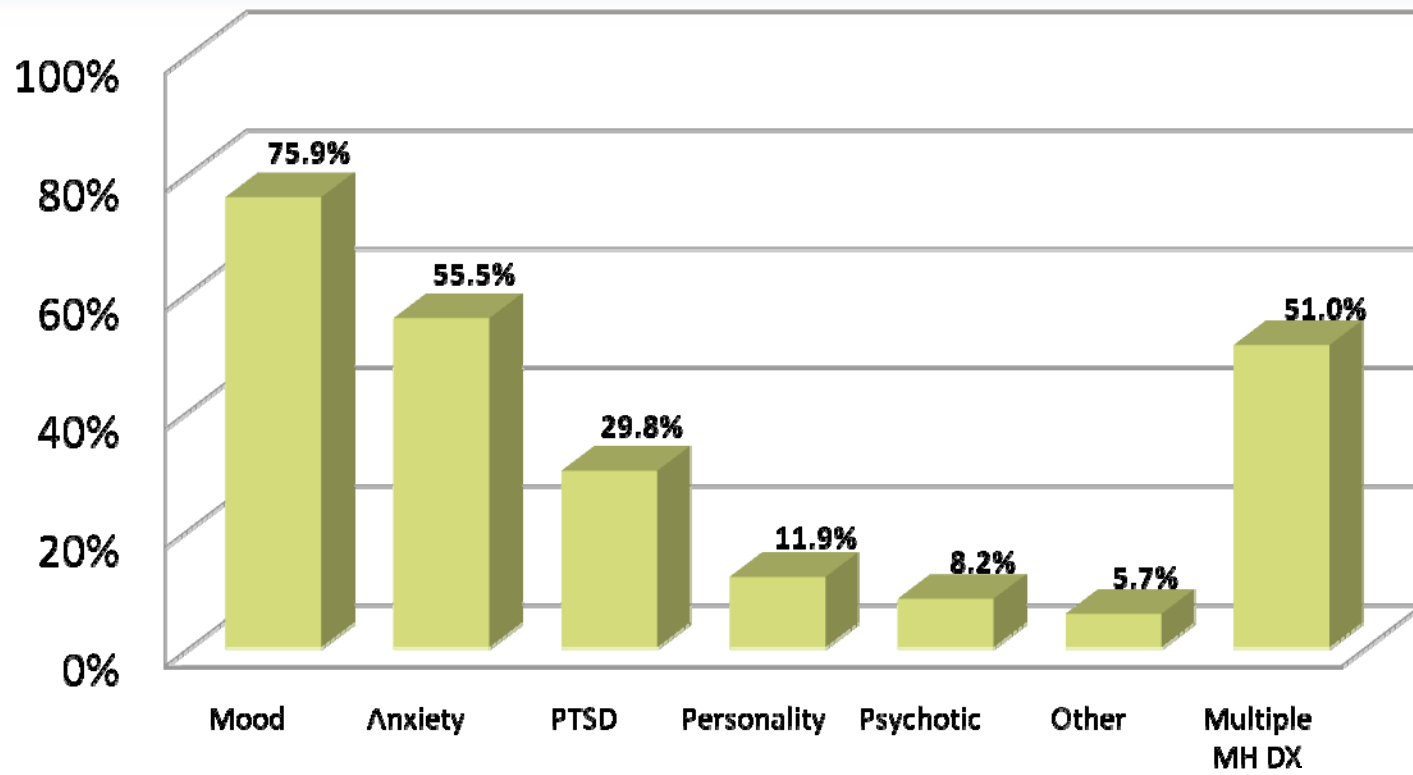
- ⊙ **Age:** mean age, 38 years (min=18, max=82); relatively equally distributed, with slightly more “under 30” than “over 50”
- ⊙ **Gender:** 51% male; 49% female
- ⊙ **Education:** Three in four (77%) at least a HSD or GED; one in three (37%) at least some college
- ⊙ **Employment:** Over one in four (29%) employed at least part-time
- ⊙ **Criminal History**
 - ⊙ Three in four (75%) ever arrested
 - ⊙ A third (31%) arrested in the past year
 - ⊙ 59% ever incarcerated
 - ⊙ 21% currently on probation



SUMMARY PROFILE

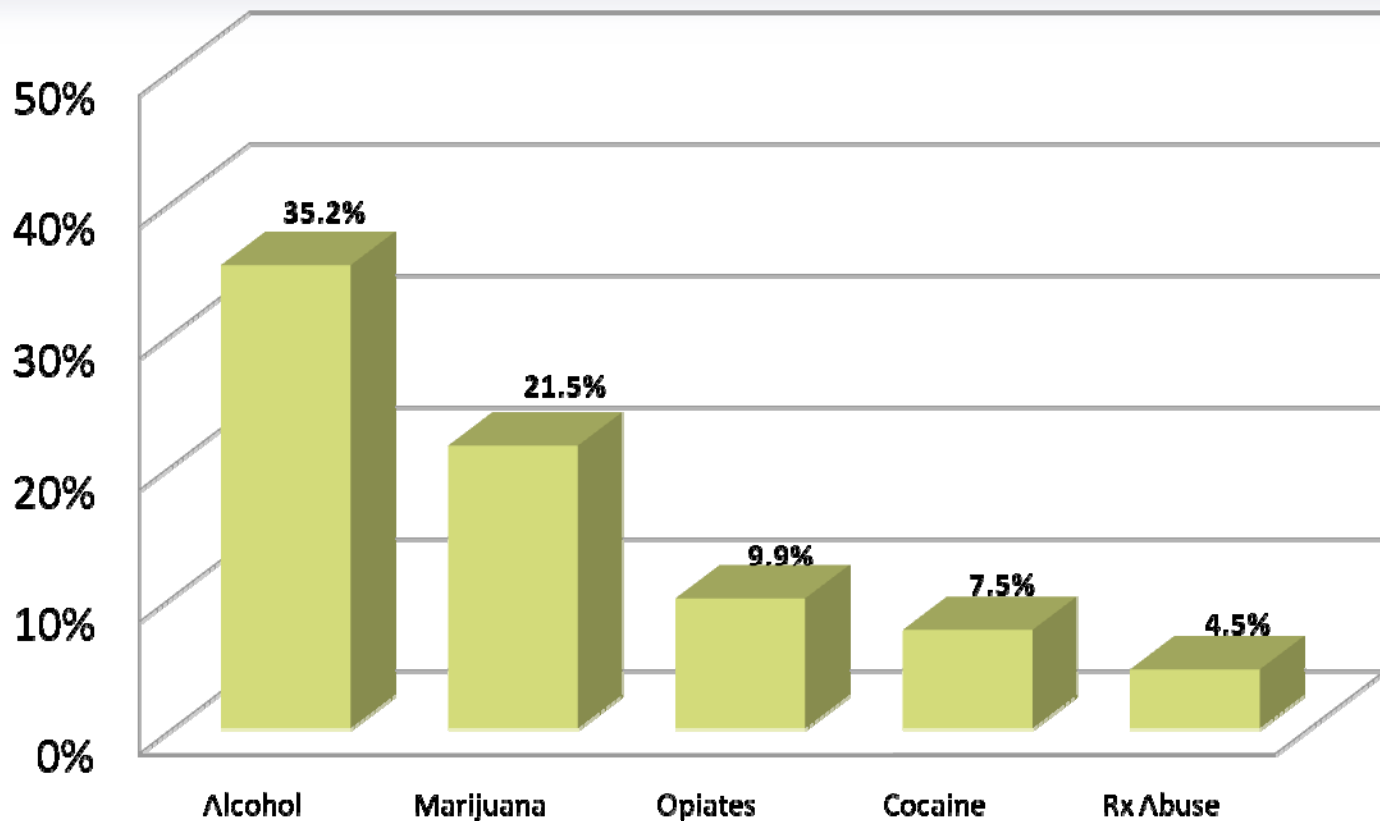
- ◎ **Insurance:** 13% no insurance; 77% public insurance; 10% private insurance
- ◎ **Income:** One in four (24%) less than \$250 per month; 47% between \$250 and \$1000 per month
- ◎ **Public Benefits:** One in three (35%) SSI or Disability; 22% more receive other public benefit such as TANF
- ◎ **Residence:** Three in four (79%) live independently; the remainder live in a treatment setting or are homeless.
- ◎ **Length of Residence:** Three in four (74%) lived in current setting for three + months

MENTAL HEALTH DIAGNOSIS



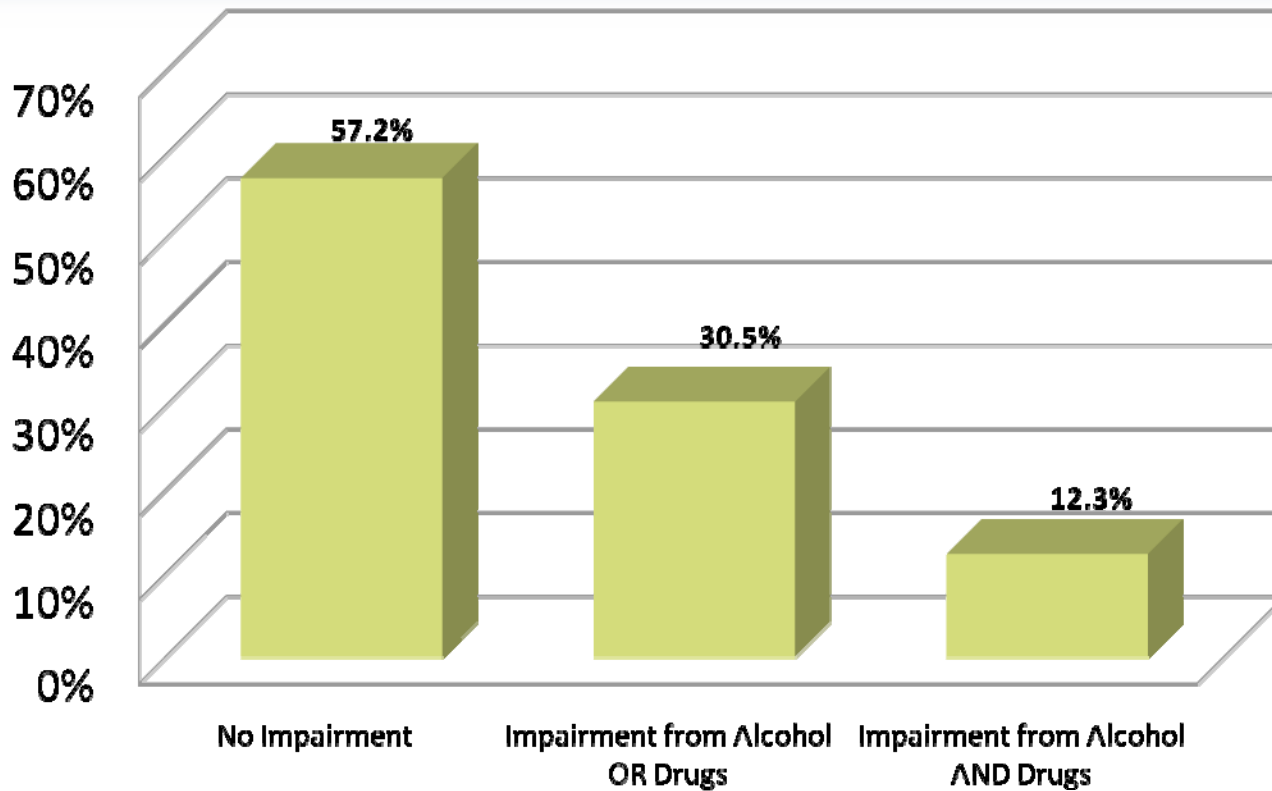
Mood and Anxiety disorders are the most prevalent; slightly more than half of the population have multiple MH diagnoses across the different disorder groups

SUBSTANCE USE



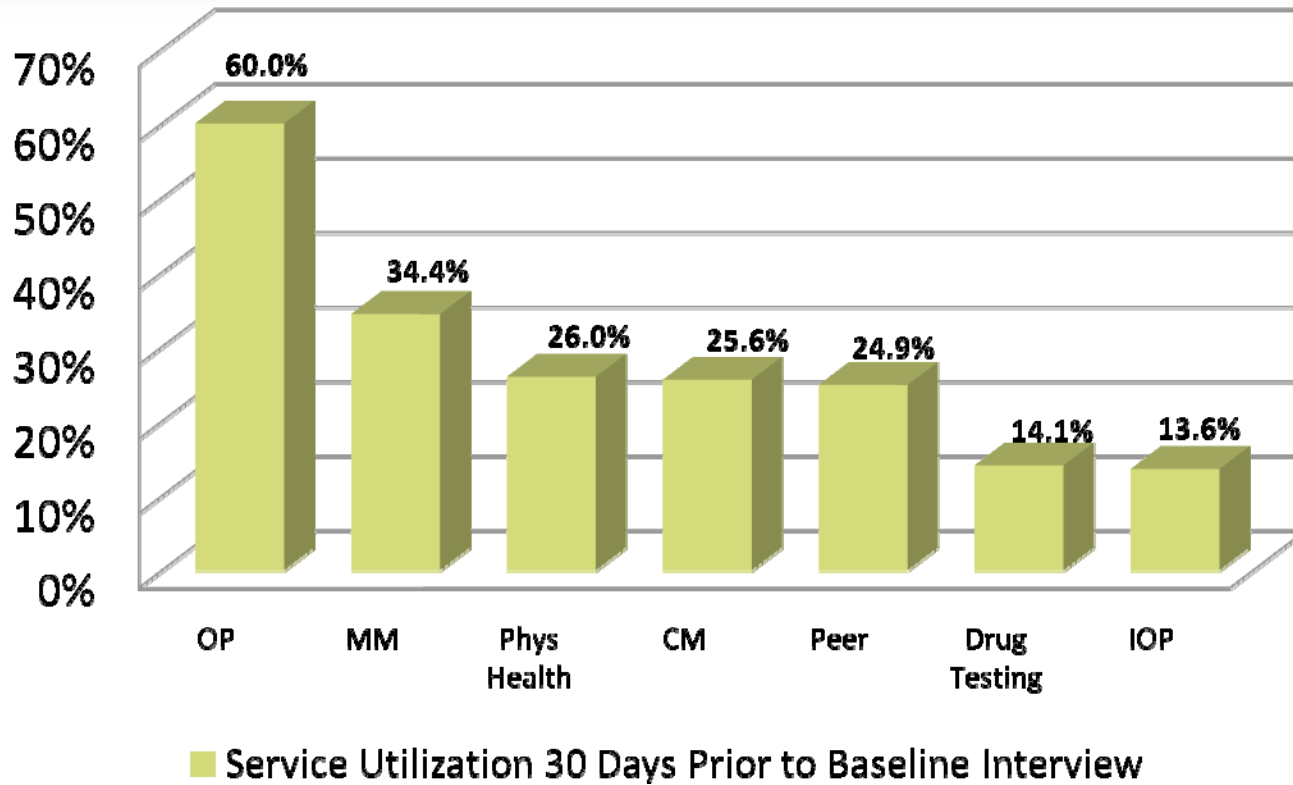
Alcohol and Marijuana are the most frequently used substances; “Opiates” includes Heroin and prescription opioid use while “Rx Abuse” includes non-opioid prescriptions

SUBSTANCE IMPAIRMENT



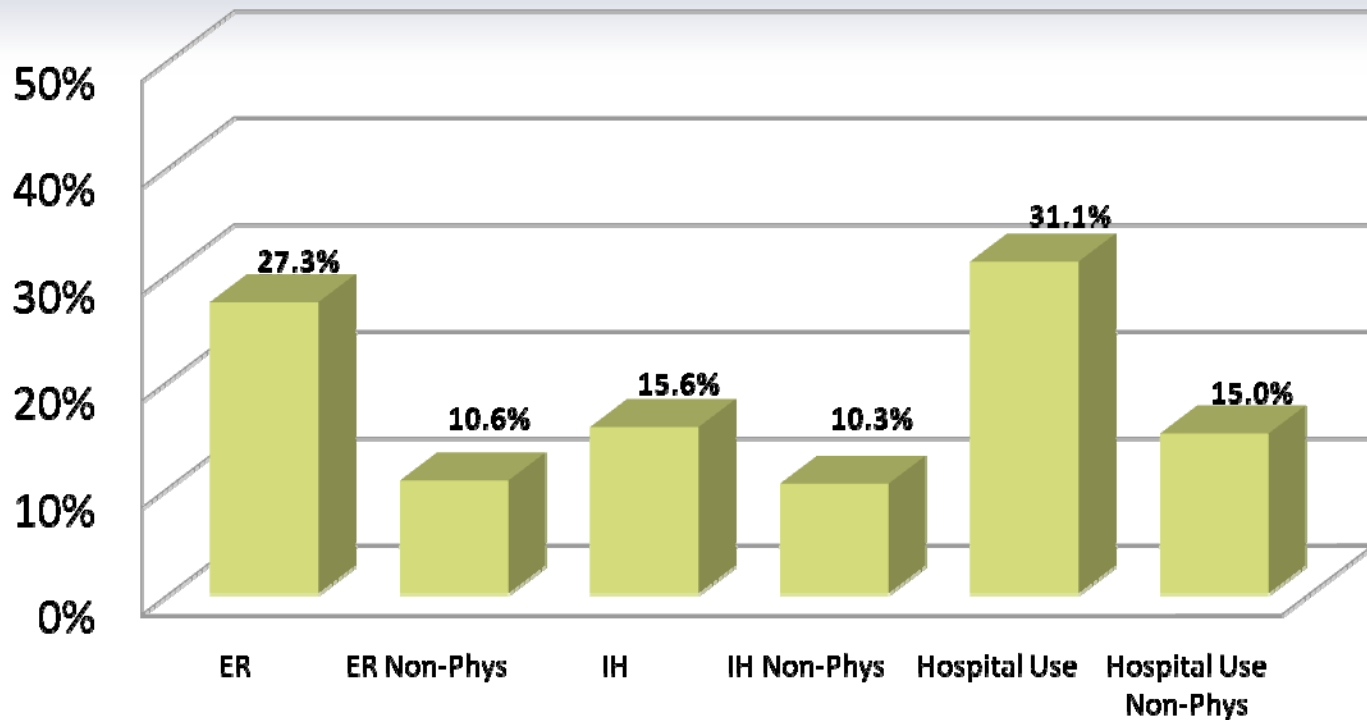
42.8% of the population experiences some symptoms of impairment

SERVICE UTILIZATION



Outpatient and Med Management most frequently used services

SERVICE UTILIZATION



■ Service Utilization 30 Days Prior to Baseline Interview

Use of the hospital for both physical and non-physical services high;
“Hospital Use” is ER and Inpatient Hospital combined

3, 6 & 9 MONTH OUTCOMES
N=227



FOLLOW-UP INTERVIEWS

- ⊙ Outcomes for enrollees who received all potential interviews – a baseline and then three follow-ups at 3, 6 and 9 months
- ⊙ Follow-ups from 14 agencies that made significant efforts to contact enrollees
- ⊙ Follow-ups target same domains as baseline with some rephrasing, e.g.,
“I am better able to control my life”



FOLLOW-UP POPULATION

- ◎ 38% (227 of 604) completed 3, 6 and 9 month follow-ups
- ◎ Respondents are significantly older (by 3 years) and engaged in treatment longer prior to enrollment (by 5 months)
 - ◎ More likely to have Psychotic disorder, receive benefits (SSI, TANF, etc.), and case management
 - ◎ Less likely to be employed and have Personality or Anxiety Disorder

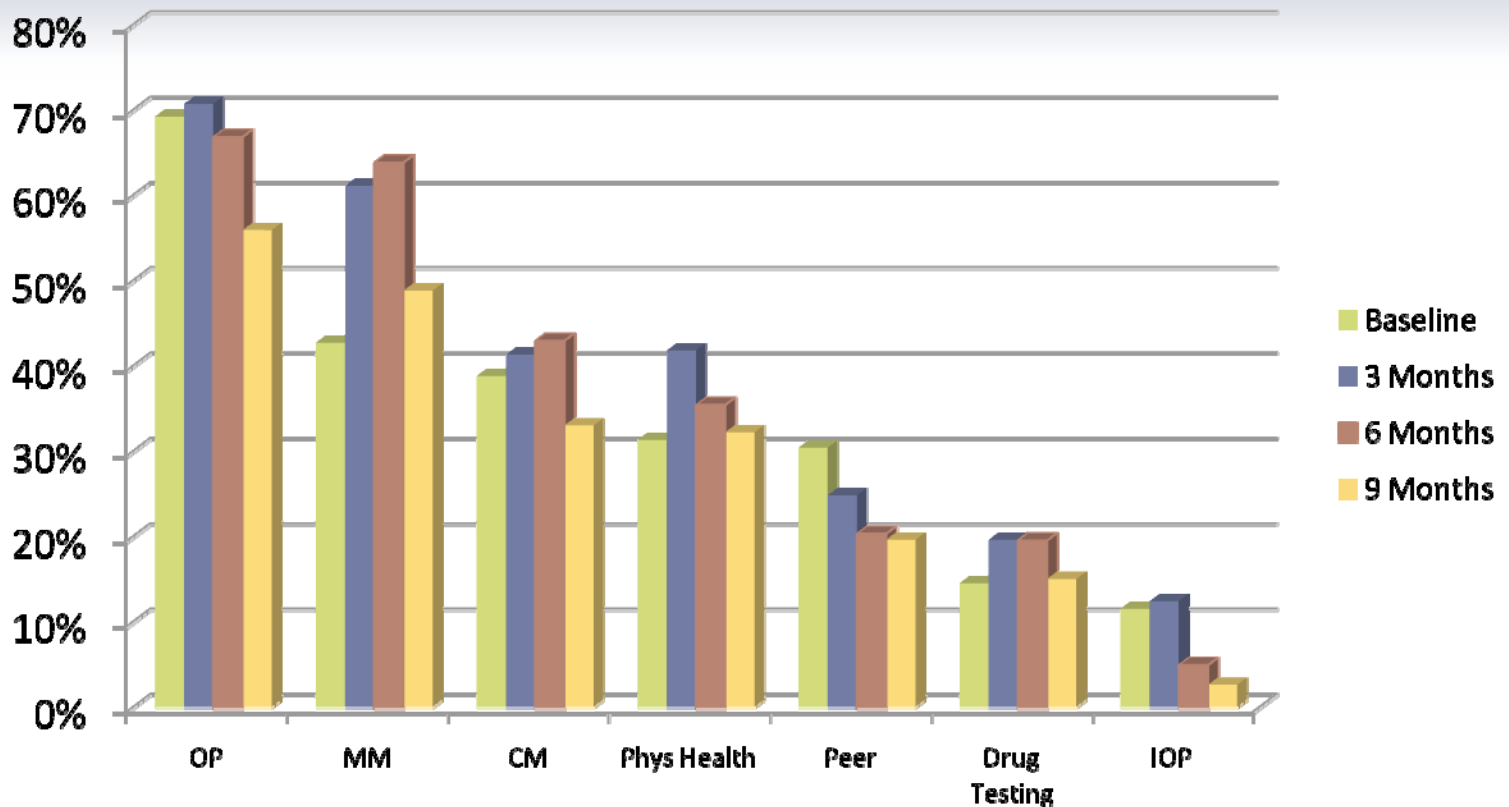


SERVICE ENGAGEMENT

- ⊙ Service utilization 30 days prior to the interview
- ⊙ **3 Months**
 - ⊙ 95% engaged in services at pilot agency
 - ⊙ 96% engaged in any service
 - ⊙ Clients received a mean of 3.4 services
- ⊙ **6 Months**
 - ⊙ 91% engaged in services at pilot agency
 - ⊙ 96% engaged in any service
 - ⊙ Clients received a mean of 3.2 services
- ⊙ **9 Months**
 - ⊙ 86% engaged in services at pilot agency;
 - ⊙ 90% engaged in any service
 - ⊙ Clients received a mean of 2.6 services



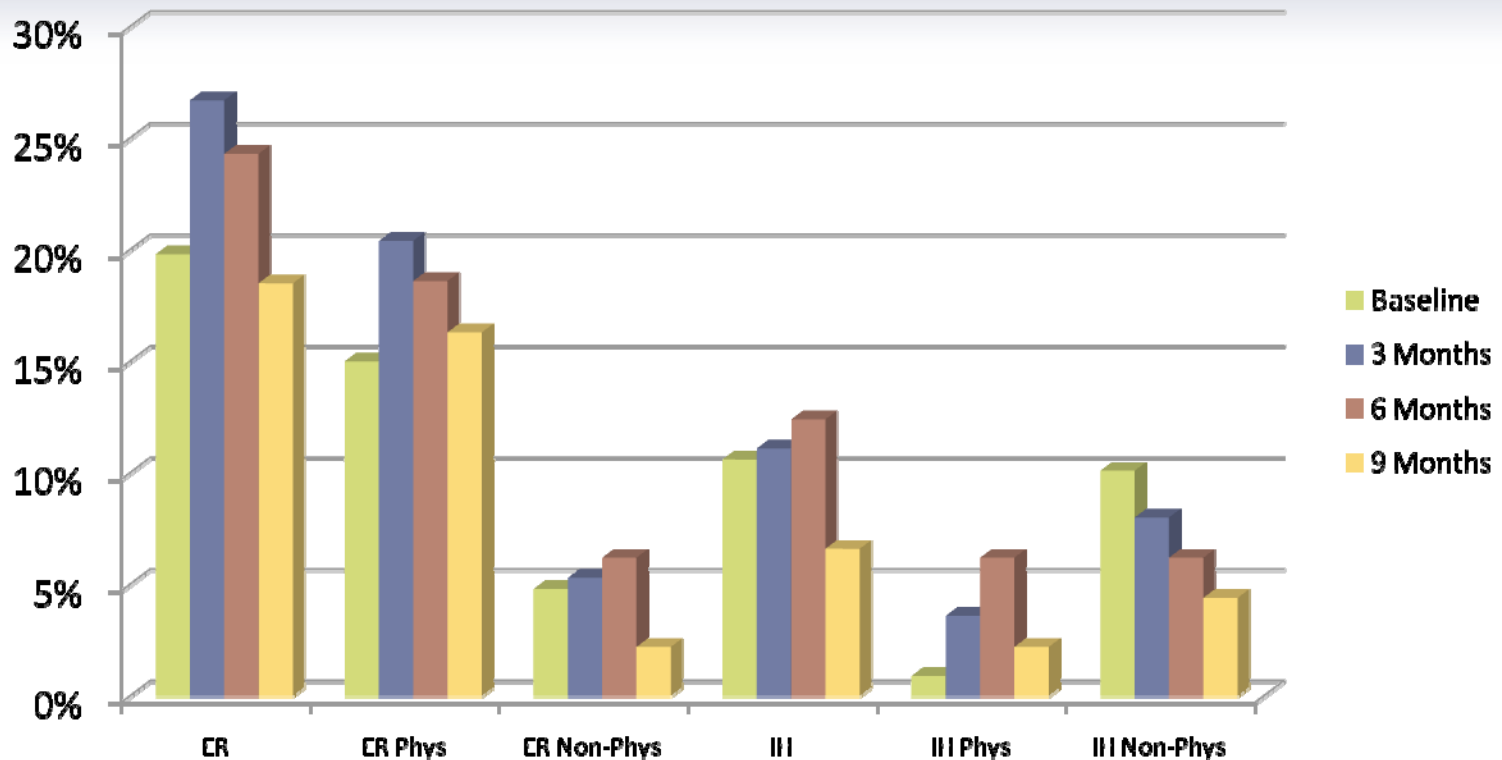
OUTCOME: SERVICE UTILIZATION



Service utilization generally increased at three months;
utilization of peer services steadily decreased throughout the follow-up period



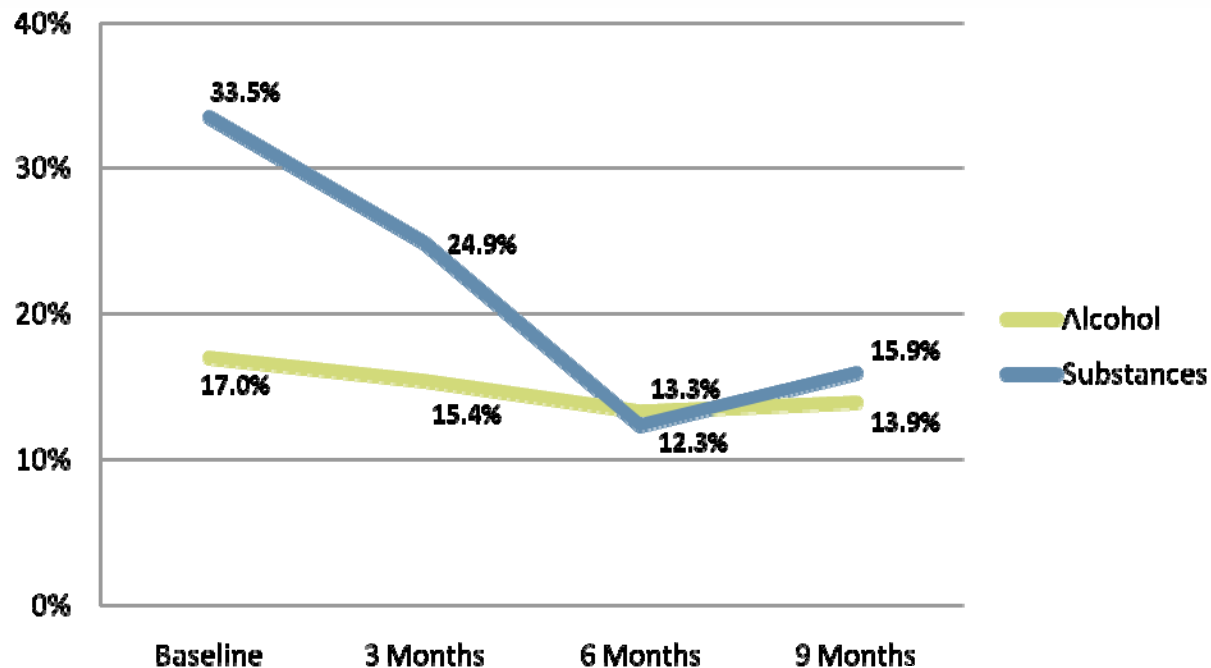
OUTCOME: HOSPITAL BASED SERVICE UTILIZATION



Use of the ER was higher at three and six months than at baseline;
IH use for physical services increased from baseline to six months while use for non-physical reasons gradually decreased



OUTCOME: ALCOHOL & SUBSTANCE IMPAIRMENT



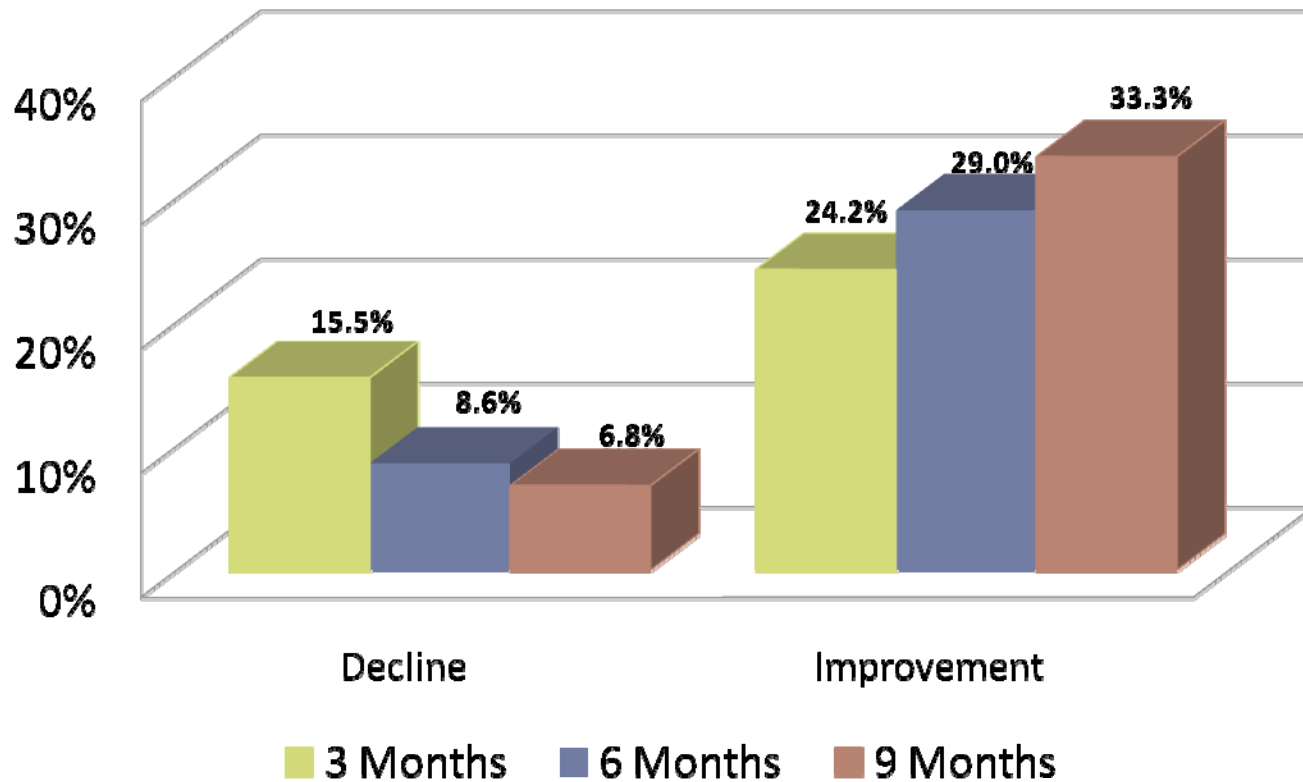
Alcohol impairment decreased slightly overall , while substance impairment decreased noticeable overall but saw a slight increase between the six and nine-month follow-ups



CHANGE

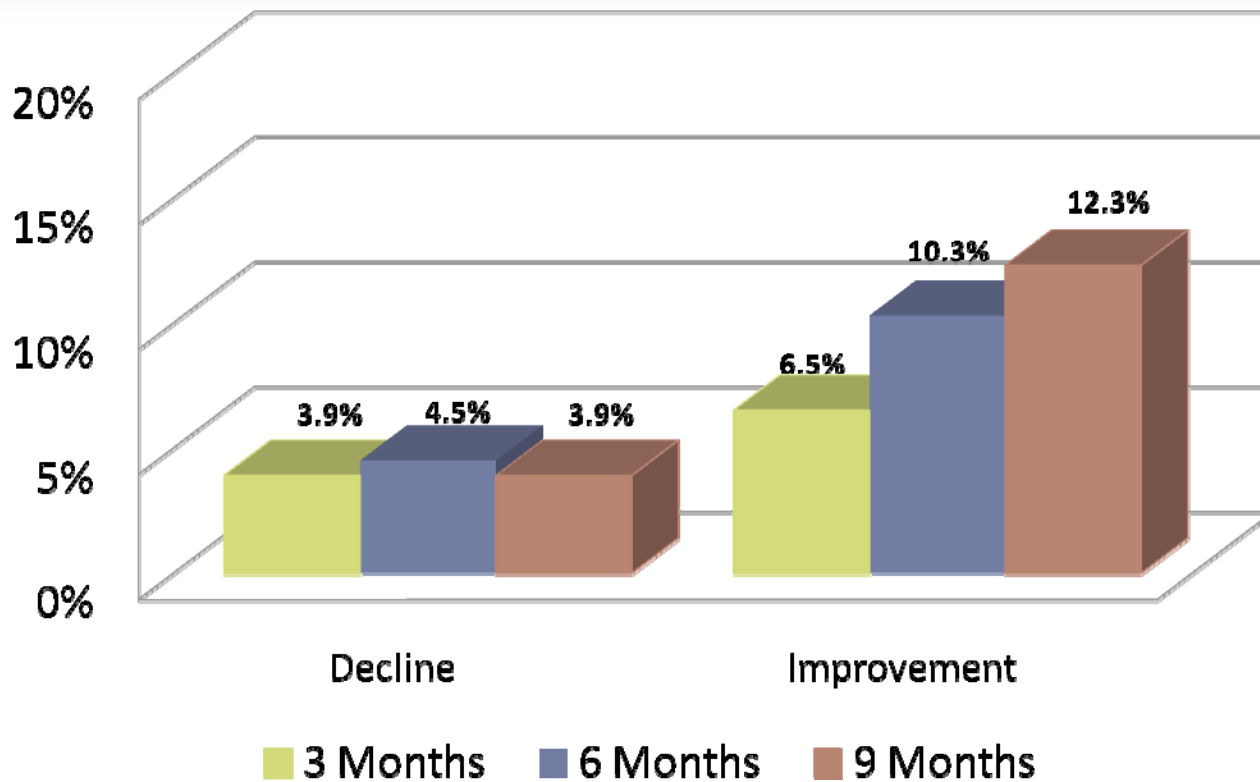
- ◎ To show improvement for an outcome, client must have the ability to change, as defined in the interview
 - ◎ For example, a person who does not pose a risk to themselves is not able to “improve,” as measured by the interview
- ◎ Thus, two groups do not show improvement
 - ◎ Those who truly did not improve
 - i.e., started by posing a risk to themselves and stayed the same throughout all follow-ups
 - ◎ Those who were not able to demonstrate change
 - i.e., started without posing a risk to themselves and stayed the same throughout all follow-ups

OUTCOME: RISK TO SELF



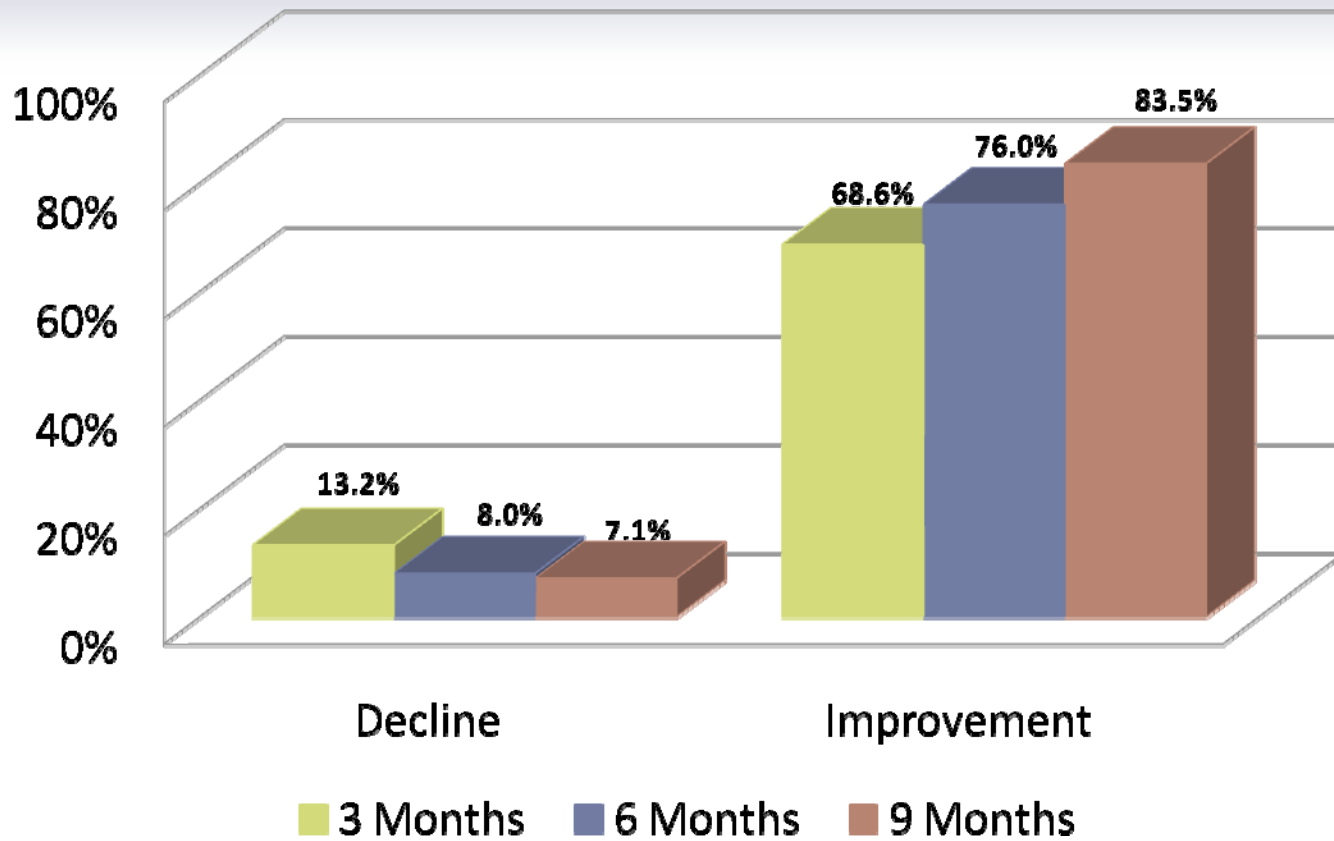
Those clients who exhibited change gradually improved over the follow-up period

OUTCOME: RISK TO OTHERS



Those clients who exhibited change gradually improved over the follow-up period

OUTCOME: CONTROL OF LIFE





OUTCOME: QUALITY OF LIFE

⊙ **Arrested**

- ⊙ 9 months prior to baseline: 25%
- ⊙ From baseline to the nine-month follow-up: 10%
 - Recent arrest rate decreased by 61%
 - Difference is statistically significant

⊙ **Employed at least part-time**

- ⊙ Baseline: 21%
- ⊙ Nine-month follow-up: 28%
 - Employment rate increased by 31%
 - Difference is statistically significant



OUTCOME CONSIDERATIONS

- ◎ **Overall, the outcomes for this group are good.**
Improvement seen in almost all of measures, most notably in arrest and employment rates.
- ◎ **What about people who don't have follow-ups?**
The remaining enrollees were largely unable to be located and most likely were no longer in treatment at the agency
- ◎ **Can same outcomes be expected of this population?**

MAT ANALYSIS



QUESTIONS, COMMENTS

Contact:

Danielle Maurice

Hornby Zeller Associates, Inc.

207 773-9529

dmaurice@hornbyzeller.com