

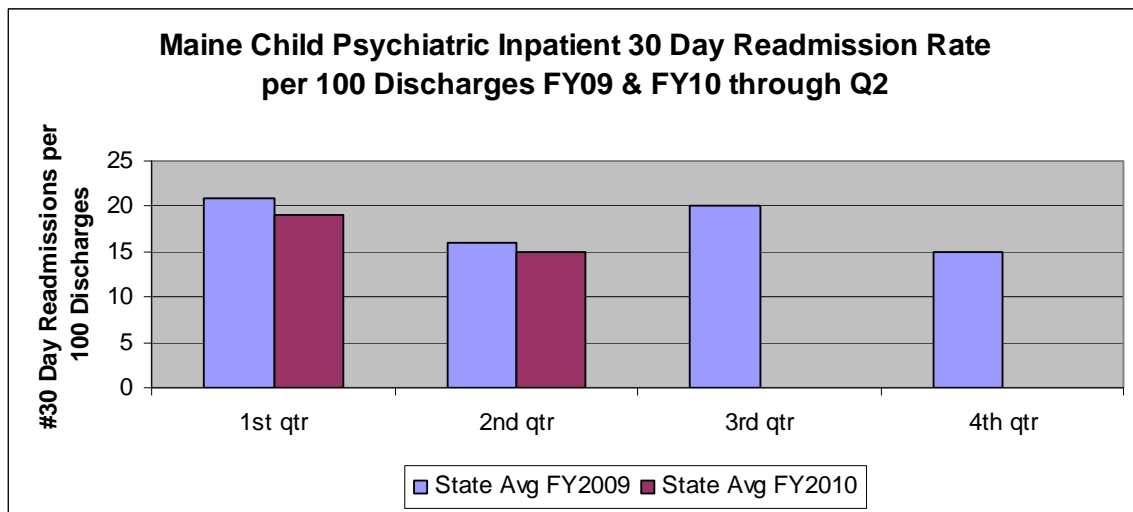
## MaineCare-Funded Child Psychiatric Hospital Readmission Report: FY2009 – FY 2010 2<sup>nd</sup> Quarter

The hospital readmission rate is a key healthcare quality measure that is used nationally to measure the effectiveness of healthcare systems. The 30 day readmission rate (readmission to a hospital within 30 days of discharge) is the most widely used version. This report shows the MaineCare-funded child inpatient psychiatric hospital services readmission rate for Maine hospitals.

- In this report, the term “30 day readmission rate” means that a member had a psychiatric readmission to any of the 4 hospitals in this report, within 30 days of discharge from one of those hospitals.
- A decrease in readmission rates shows that fewer people go back into the hospital within 30 days.
- The readmission rate is displayed as a “rate per 100 discharges” so that the different measures among hospitals and across time periods are comparable.
- In FY 2009, out of 1,791 discharges statewide, 18% (321) had a readmission within 30 days. During the first half of FY 2010, out of 755 discharges statewide, 16% (119) had a readmission within 30 days.
- In FY 2009, 79% (252 of 321) of readmissions were to the original admitting facility; 21% (69 of 321) were readmitted to a different facility. In the first half of FY 2010, 62% (74 of 119) of readmissions were to the original admitting facility; 38% (45 of 119) were readmitted to a different facility.
- Changes from quarter to quarter may be due to seasonal change. Graphs 1-5 compare change from year to year as well as change within the year.

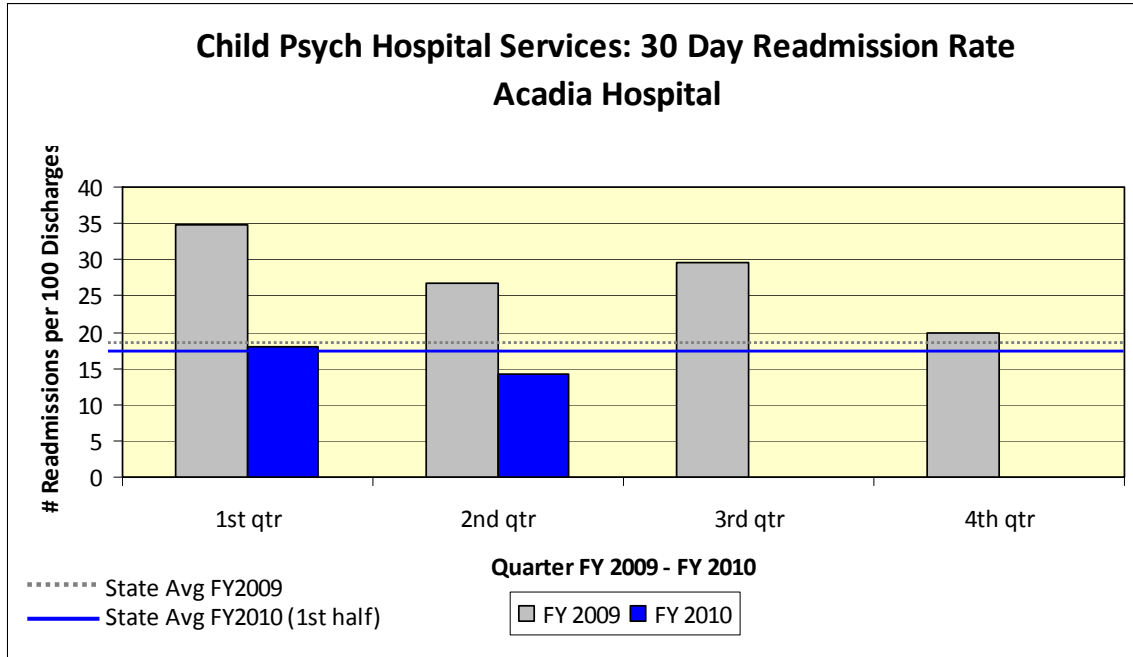
Graph 1 compares the statewide child psychiatric inpatient hospital services 30 day readmission rates for FY09 and quarters 1 and 2 in FY10. The annual average 30 day readmission rate decreased from 18% to 16% from FY09 to FY10.

Graph 1

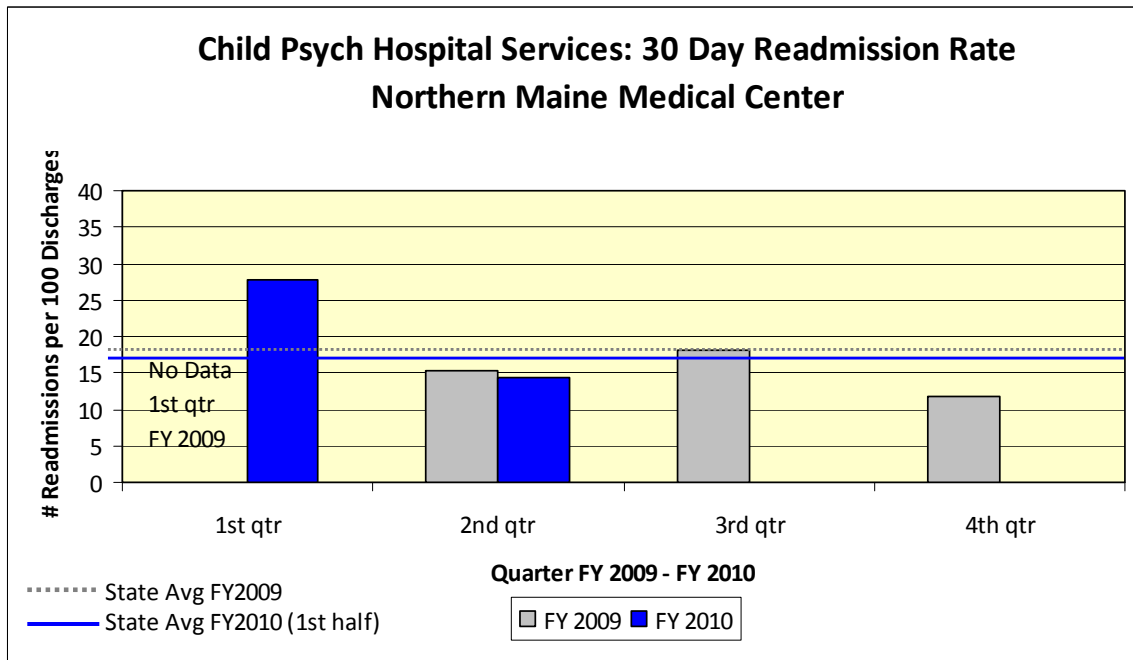


Graphs 2 -5 displays the quarterly trends in the 30 day readmission rates for each hospital in FY09 to the middle of FY10.

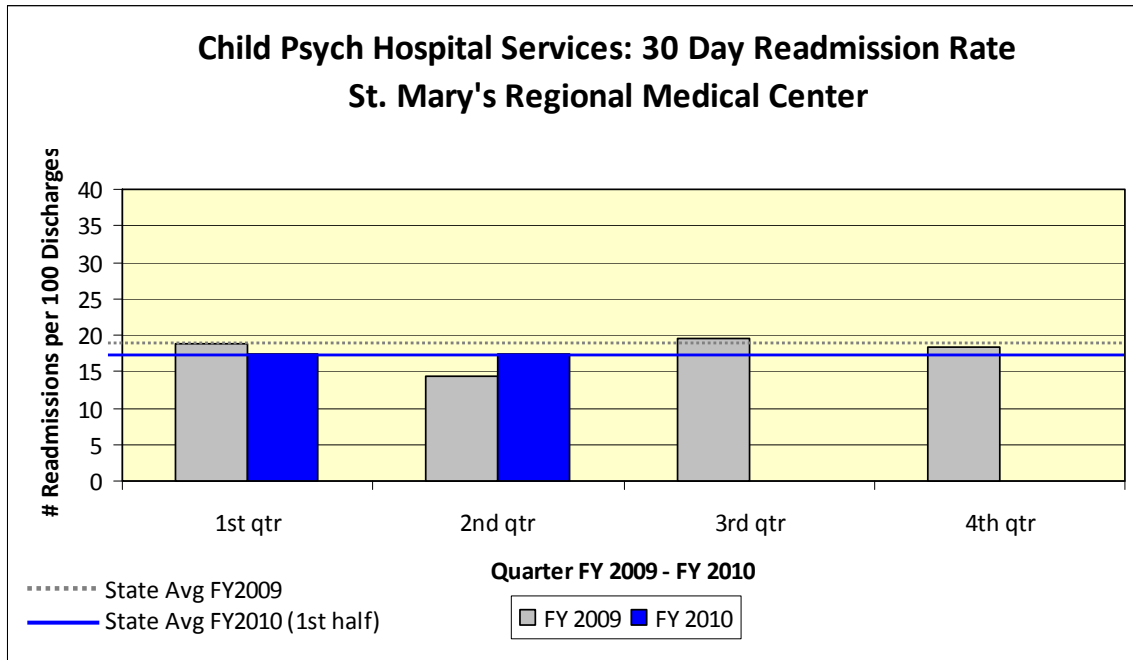
Graph 2



Graph 3



Graph 4



Graph 5

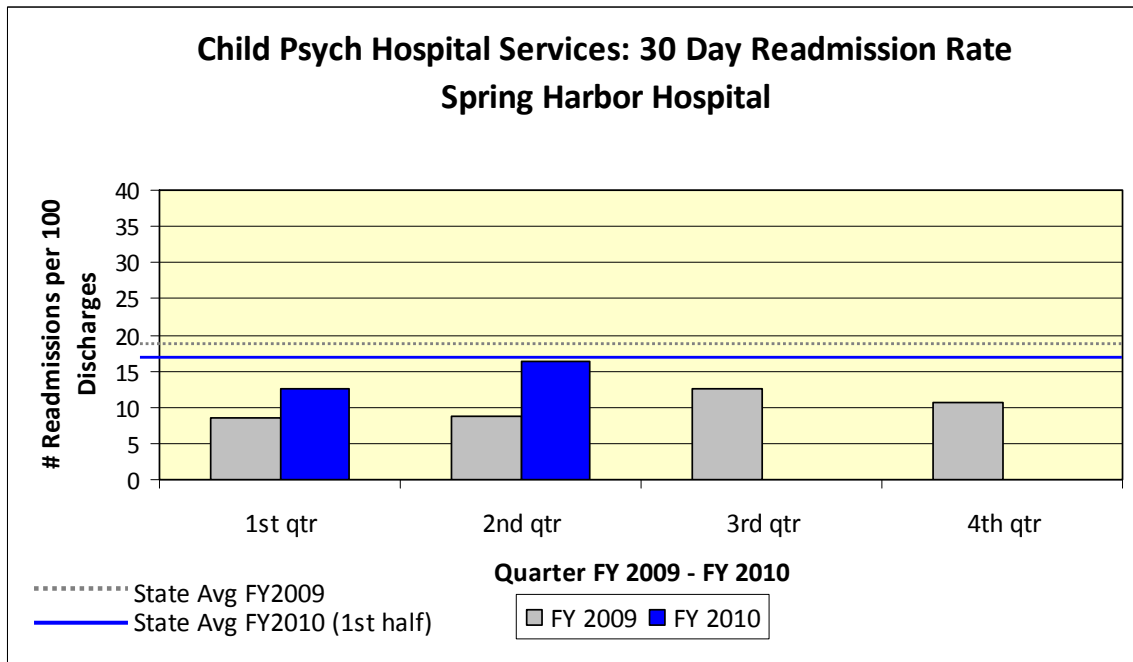


Table 1 displays the gender and age information about all children discharged from inpatient psychiatric hospital services from all four Maine hospitals in FY2009.

Table 1

<b>Gender and Age of Members Discharged from All Child Psychiatric Hospitals in FY 2009</b>				
	Discharge with NO Readmission*		Discharge With Readmission	
<b>Age Group</b>	Male	Female	Male	Female
0-3	0	0	0	0
4-5	9	7	0	1
6-12	264	97	49	22
13-17	377	396	79	106
18-20	140	143	28	27
Over 20 years old	23	16	5	2
<b>Totals</b>	<b>813</b>	<b>659</b>	<b>161</b>	<b>158</b>

\* No Readmission within 30 days of discharge.

Table 2 displays the gender and age information about all children discharged from inpatient psychiatric hospital services from all four Maine hospitals in the first half of FY 2010.

Table 2

<b>Gender and Age of Members Discharged from All Child Psychiatric Hospitals First Half of FY 2010 (July-Dec 2009)</b>				
	Discharge with NO Readmission*		Discharge With Readmission	
<b>Age Group</b>	Male	Female	Male	Female
0-3	2	0	0	0
4-5	3	4	0	1
6-12	115	51	30	8
13-17	168	188	26	42
18-20	54	45	3	9
Over 20 years old	5	1	0	0
<b>Totals</b>	<b>347</b>	<b>289</b>	<b>59</b>	<b>60</b>

\* No Readmission within 30 days of discharge.

- In the group with readmissions, males and females are almost the same in number, while the in the group with no readmissions, the number of males are 23% greater than the number of females in FY 09 (812 vs. 658), and 20% higher in the first half of FY 10 (347 vs. 289).
- In the 6-12 age group, males outnumber females in both categories (“no” readmission and “with” readmission).
- In the 13-17 age group, females outnumber males in both categories (“no” readmission and “with” readmission).

Table 3 displays the number of members with multiple 30 day readmissions. 214 members had one or more readmissions.

Table 3

<b>Number of Members with Multiple 30 Day Readmissions FY 2009</b>	
<b>Total Readmissions</b>	<b>321</b>
Members with 1 Readmission	153
Members with 2 Readmissions	33
Members with 3 Readmissions	16
Members with 4 Readmissions	7
Members with 5 Readmissions	4
Members with 6 Readmissions	1

Table 4 displays the number of members with multiple 30 day readmissions. 94 members had one or more readmissions.

Table 4

<b>Number of Members with Multiple 30 Day Readmissions First Half FY 2010</b>	
<b>Total Readmissions</b>	<b>119</b>
Members with 1 Readmission	76
Members with 2 Readmissions	13
Members with 3 Readmissions	4
Members with 4 Readmissions	0
Members with 5 Readmissions	1
Members with 6 Readmissions	0

- Of the 321 “30 day readmissions”, 48% (153) are accounted for by members who have only a single 30 day readmission in FY 09, and 64% (76) in the first half of FY 10.
- 61 members account for 52% (168) of the “30 readmissions” in FY 09. 33 of those members had 2 readmissions, 16 had 3 and 12 members had 4-6 “30 day readmissions”.
- 18 members account for 36% (43) of the “30 readmissions” in FY 10. 13 of those members had 2 readmissions, 4 had 3 and 1 member had 5 “30 day readmissions”.

### Summary

Child inpatient psychiatric hospital services readmission rates in FY 2009 and the first half of FY 2010 varied both over time and between the hospitals. Overall, the FY 2010 “30-day readmission” rate decreased compared to the rate in the first half of FY 2009 (16% to 18%). There are differences between male and female readmissions among the different age groups. Finally, 29% (61 of 214) of members with readmissions accounted for 52% of the readmissions in FY 09, and 19% (18 of 94) of members with readmissions accounted for 36% of the readmissions in the first half of FY 10. This data suggests the need for further research into the differences in readmission rates and ways that members’ needs are being met by the healthcare system.